



O Nata Lux

Latin text anonymous, English adaptation by the composer

SATB choir/Piano

Performance Notes:

After a search for a setting of the “O Nata Lux” text that would be accessible for a volunteer, *ad hoc* church choir yielded no suitable results, this setting nearly brought itself into being to fill that void. Simple yet profound, the easy-to-sing melody lines shouldn’t be over-worked or analyzed, and the underlying chord structure gives clear homage to Morten Lauridsen’s setting of this text that we would have been happier to sing had the choir been up to it.

The chant notation at the beginning is a simple reduction of the initial melody line, and can be simply ignored, sung by a solo, sung by the choir in unison, or sung by the choir in unison with the piano providing a low D (opening note of the score) pedal, refreshed at the pauses in the chant line. If this is done, the final note of the chant should fall on the downbeat of measure 1.

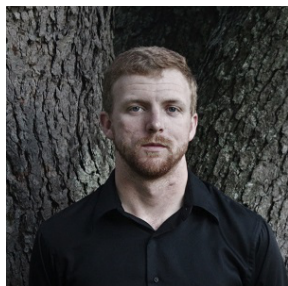
If needed for pitch support, the piano can play the first chord of each measure in the *a cappella* section (mm. 52-58).

*O nata lux de lumine,
Jesu redemptor saeculi,
Dignare clemens supplicum
Laudes precesque sumere.*

*Qui carne quondam contegi
Dignatus es pro perditis,
Nos membra confer effici
Tui beati corporis.*

O Light born of heavenly light
Jesus, redeemer of the world,
In mercy deign to receive
The prayers and praises of the suppliant.

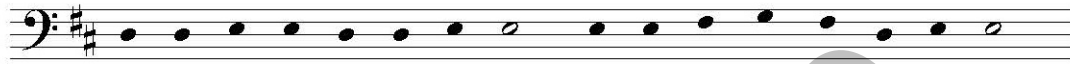
You who once deigned to take on flesh
For the sake of all the lost
Grant us the gift of being made
Members of your blessed body.



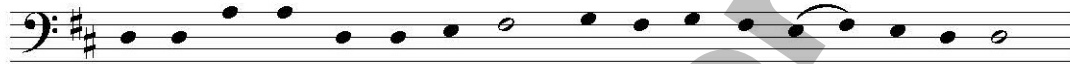
Douglas Byler (b. 1988) is a composer and real estate entrepreneur from the Shenandoah Valley in Virginia. He received a Bachelor of Music degree in Composition from James Madison University in Harrisonburg, VA and a Master of Music in Composition from Westminster Choir College in Princeton, NJ. His music has won several awards and has been performed across the United States.

O Nata Lux

Douglas Byler (ASCAP)



O na - ta lux de lu - mi - ne, Je - su re - demp - tor sae - cu - li



dig - na - re clem - ens sup - pli - cum laud - es pre - ces que - su - me - re

reverently ♩ = 60

Soprano
Alto

Tenor
Bass

SA

© 2022 Douglas A. Byler. All rights reserved.



This score may have been delivered electronically. A license is required to make and maintain copies, and can be obtained or verified by contacting the composer. For inquiries regarding licensing, performing or recording this work, please email douglas.byler@gmail.com

douglasbyler.com

O Nata Lux

SA ¹²
 pre-ces - que su - me-re.

mf

TB ¹⁷ *mf unis.*
 O light born of heav'n-ly light, Je-sus re - deem - er of the world, in mer-cy

mp

SA ²² *mf*
 Qui car-ne

TB ²²
 deign to re-ceive the prayers and prais-es of the sup - li-ants.

sf *mf* *mf*

O Nata Lux

27

SA

quon - dam con - te - gi - dig - na - tus es pro per - di - tis. Nos mem - bra con - fer ef - fi -

32

SA

unis.
ci - tu - i be - a - ti cor - por - is.

TB

mf
You who once deigned to take on flesh for the

37

SA

mf
Grant us the gift of be - ing made mem - bers

TB

sake of all the lost, Grant us the gift of be - ing made mem - bers

O Nata Lux

41 *molto rit.* *f* *a tempo*

SA
of your bles - sed bod - y, Grant us the gift of be - ing made

TB
of your bles - sed bod - y, Grant us the gift of be - ing made

41 *ff*

45 *mp* *p*

SA
mem - bers of your bles - sed bod - y.

TB
mem - bers of your bles - sed bod - y.

45 *mp* *mp*

O Nata Lux

50 *p*

SA O na - ta lux, de lu - mi - ne, Je - su re -

TB *p*

54 rit.

SA demp - tor sae - cu - li, Dig - na - re cle - mens sup - pli - cum Lau - des pre - ces - que su -

TB demp - tor sae - cu - li, Dig - na - re cle - mens sup - pli - cum Lau - des pre - ces - que su -

59 a tempo

SA - me - re.

TB - me - re.

59 *p* LH *pp* *8va*